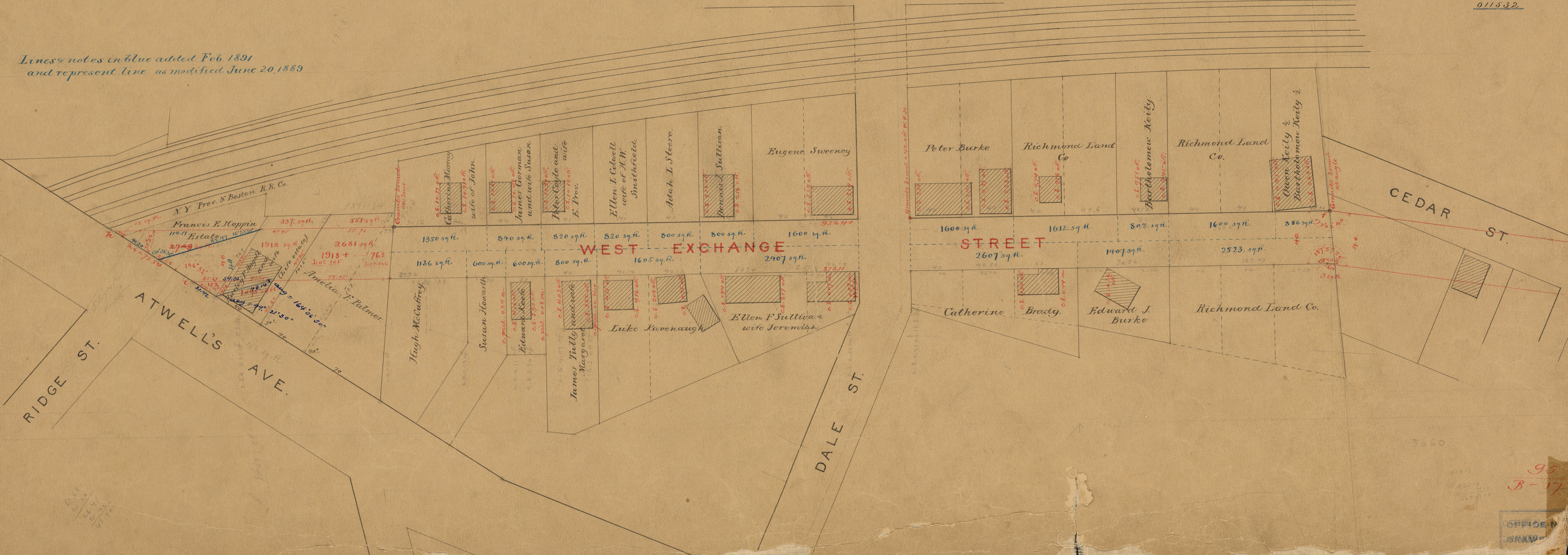


HARRIS AVE.

PROVIDENCE, R. I.  
CITY ENGINEER'S OFFICE  
STREET LINE DEPT.  
Dec. 12, 1885  
011532

Lines & notes in blue added Feb. 1891  
and represent line as modified June 20, 1889



95  
B-17  
OFFICE DRAWN  
5667  
95  
17